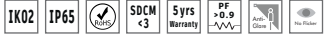
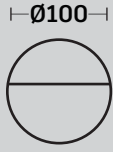
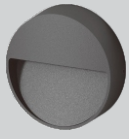


DAKU

LED Wall Mounted Floor Washer



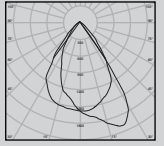
DALI | ON/OFF



Wattage Range : **4W**
 Lumen Range : **350lm**
 CCT : **2700K-4000K**
 CRI : **80/90**
 IP Rating : **IP65**
3 Step Macadam
 Material : **Die Cast Aluminium**
 Lifetime : **L70>50,000 hrs**
 Voltage : **220-240V AC**

| Wattage | D | T |
|---------|-----|----|
| 4W | 100 | 30 |

Optics : Symmetric



Application

The Daku Wall-Mounted Floor Washer is a compact architectural lighting fixture designed to deliver soft, controlled illumination across floor surfaces and pathways. Its subtle, recessed-style appearance and shielded light output help create comfortable guidance lighting while minimizing glare.

Accessories

IP68 Connectors



T-Connector



I-Connector

BR-SP X R X X X X

4W

Round

Surface

Custom Grey Black White

Wide

4000K 3000K 2700K

