

# NEONITE

LED Flexible Neon Light (Side Bend | Top Bend)



DALI | ON/OFF

**Dim 1**  
 16.5 x 16.5  
**Dim 2**  
 10 x 10  
**Dim 3**  
 11.5 x 21

Wattage Range : **6W - 18W**  
 Lumen Range : **490lm - 1430lm**  
 CCT : **2700K-6500K**  
 CRI : **80/90**  
 IP Rating : **IP65/IP67/IP68**  
**3 Step Macadam**  
 Material : **Silicon**  
 Lifetime : **L70>50,000 hrs**  
 Voltage : **DC24V/48V**

Wattage	W	H	Reel Length
6W	16.5	16.5	Customizable from 1m up to 10m
12W	16.5	16.5	
6W	10	10	
10W	10	10	
18W	11.5	21	

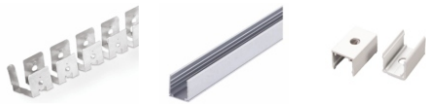
Optics : 120°

## Application

Neonite LED Neon Flex Light is a flexible, energy-efficient lighting solution designed to replicate the continuous glow of traditional neon while offering superior durability and performance. Featuring advanced LED technology enclosed within a high-quality silicone housing, Neonite delivers smooth, dot-free illumination with excellent color consistency.

## Accessories

### Channels & Clips



### Cable Entry



Direct Entry   Side Entry   Bottom Entry

### IP68 Connectors



T-Connector   I-Connector

BR-NE X L X W X W X

6W-18W

Linear

Bottom Side Direct

White

3D bend Horizontal Vertical

Wide

4000K 3000K 2700K

